

mMD Explosion-proof LED multi colour beacon

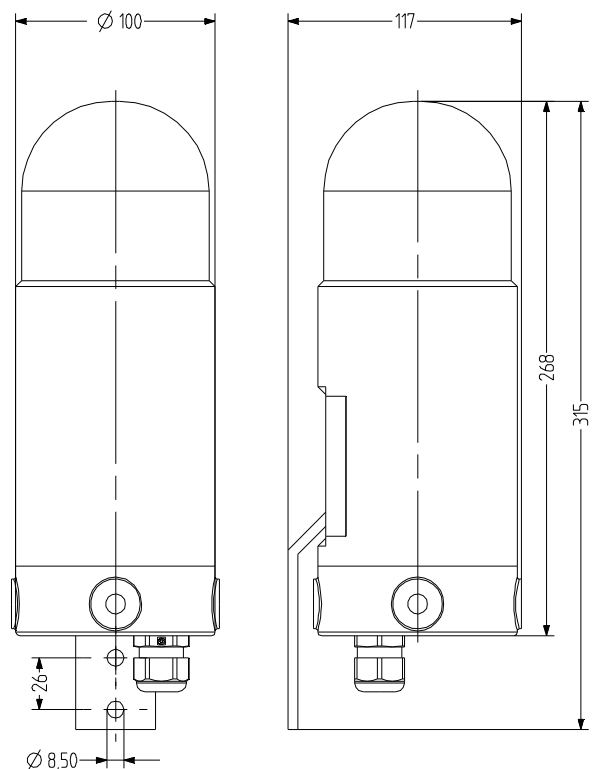
- 5 signal colours and 3 operating modes, can be switched
 - steady/flashing/strobe light
- Certified for gas and dust hazardous areas of zone 2, 22
- Polycarbonate plastic housing
- Mounting bracket V4A
- Degree of protection IP 66
- Protection class II (AC) or III/II (DC)

II 3 G Ex nR IIC T6 Gc
 II 3 D Ex tc IIIC T85 °C Dc
 -20 °C ≤ Ta ≤ +50 °C
 Zone 2, 22



TECHNICAL DATA

Housing	Ø 103 mm, Polycarbonate black
Colours	green, yellow, red, blue, clear
Lens	Polycarbonate, clear
Type of mounting	Mounting bracket, any
Cable entry	Cable gland M20 × 1.5
Connection technology	bis 2,5 mm ²
Beacon type	LED steady beacon, LED flashing beacon or LED strobe beacon
Light source	LEDs
Duty cycle	100 %
Operating temperature	-20 °C / +50 °C
Degree of protection	IP66
Weight	1,4 kg



mMD

ORDER DATA

Lens colour	Nominal voltage	Voltage range (V)	Nominal current (A)	Order number
clear	24 V DC	+/- 20 %	<0,135	337 000 005
	230 V AC	+/- 20 %	<0,050	337 000 313



MPL

ACCESSORIES

Type	Type of accessory	Order number
MPL	Mounting plate including explosion-proof junction box	335 500 000